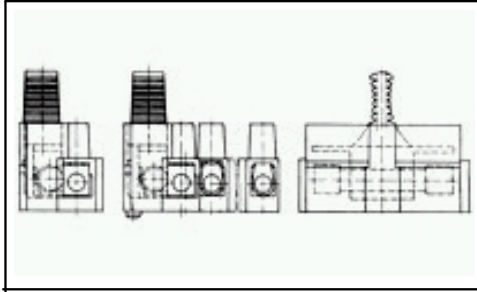


Product Details for TSB150002



TSB150002

Tyco Part Number: 1546263 -2

[Active](#)

Europa Terminal Blocks

[ELV Compliant](#) ([Find RoHS Compliant Alternates/Compliance Statement](#))

Product Highlights:

- ? Terminal Block
- ? 13.50 mm Centerline
- ? Number of Circuits = 2
- ? Wire Range = 1.25 -8.00; [16 -8] mm [AWG]
- ? Without Wire Protection

[View all Features](#)

Quick Links

- [Check Pricing & Availability](#)
- [Search for Tooling](#)
- [Product Feature Selector](#)
- [Contact Us About This Product](#)

Documentation & Additional Information

Product Drawings:

- ? [13.5MM PITCH TUNNEL CONNECTION EUROPA TERMINAL BLOCK](#) (PDF, English)

Catalog Pages/Data Sheets:

- ? None Available

Product Specifications:

- ? None Available

Application Specifications:

- ? None Available

Instruction Sheets:

- ? None Available

CAD Files:

- ? None Available

Additional Information:

- ? [Product Line Information](#)

Additional Product Images:

- ? [Line Drawing](#)

Related Products:

- ? [Tooling](#)

[List all Documents](#)

Product Features (Please use the Product Drawing for all design activity)

Product Type Features:

- ? [Product Type](#) = Terminal Block
- ? [Number of Circuits](#) = 2
- ? [Integrated Fuse](#) = No
- ? Color = Natural
- ? Screw Material = Steel
- ? UL Recognized = File No. E63810

Mechanical Attachment:

- ? Screw Plating = Bright Zinc/Chrome

Electrical Characteristics:

- ? Current Rating (Amps.) = 40
- ? Voltage Rating (VAC) = 300

Body Related Features:

- ? [Centerline \(mm \[in\]\)](#) = 13.50 [0.532]
- ? [Wire Range \(mm \[AWG\]\)](#) = 1.25 -8.00; [16 -8]
- ? [Wire Protection](#) = Without
- ? [Ground](#) = Without
- ? [Series](#) = TSB1500
- ? CSA File No. = LR28387

Contact Related Features:

- ? Contact Material = Brass
- ? Contact Mating Area Plating = Tin

Housing Related Features:

- ? Housing Material = Polyamide

Industry Standards:

- ? [RoHS/ELV Compliance](#) = ELV compliant
- ? [Lead Free Solder Processes](#) = Not relevant for lead free process
- ? RoHS/ELV Compliance History = Always was ELV compliant

Conditions for Usage:

- ? [Temperature Range \(°C\)](#) = -35 - +100

Other:

- ? Brand = Buchanan